

ER COLLET CHUCK & COLLET SET FOR A SPECIAL PRICE!

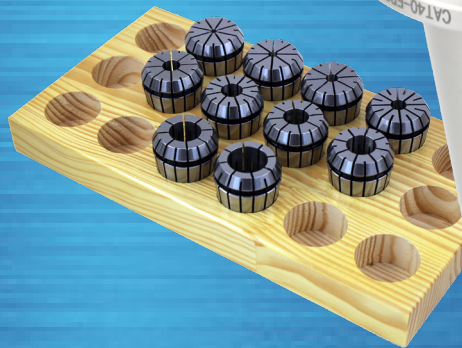
Pioneer ER Collet Chucks:

- 0.0001" (3 Micron) TIR Taper to Taper
- True Dynamic Balance for G6.3 @ 20,000 RPM
- DIN AD/B Flange Coolant
- Tapers held tighter than AT3
- Unbeatable Holder Performance



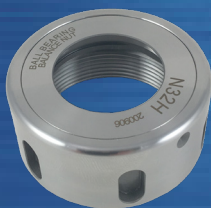
**CAT40- ER16H X 2.50" +
9 Piece ER16 Collet Set,
1/8"-3/8" collets**

**for \$189!
w/ B-Nut \$229**



**CAT40- ER32 X 2.50" +
10 Piece ER32 Collet Set,
1/8"-5/8 + 3/4" collets**

**for \$199!
w/ B-Nut \$249**



**Double Your Torque
w/ a Bearing Nut
For An Upcharge!**